



PATUCK - GALA COLLEGE OF COMMERCE & MANAGEMENT

“Affiliated to University of Mumbai”

Re-accredited with B++ grade by NAAC (2.77 CGPA)

CRITERIA 7

7.3 INSTITUTIONAL DISTINCTIVENESS

SERVICE TO SOCIETY

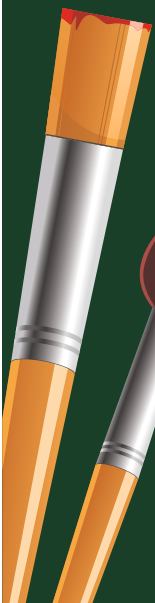
Vision

“TO INNOVATE, ENHANCE, EMPOWER AND
EXCEL IN EDUCATION.”

Mission

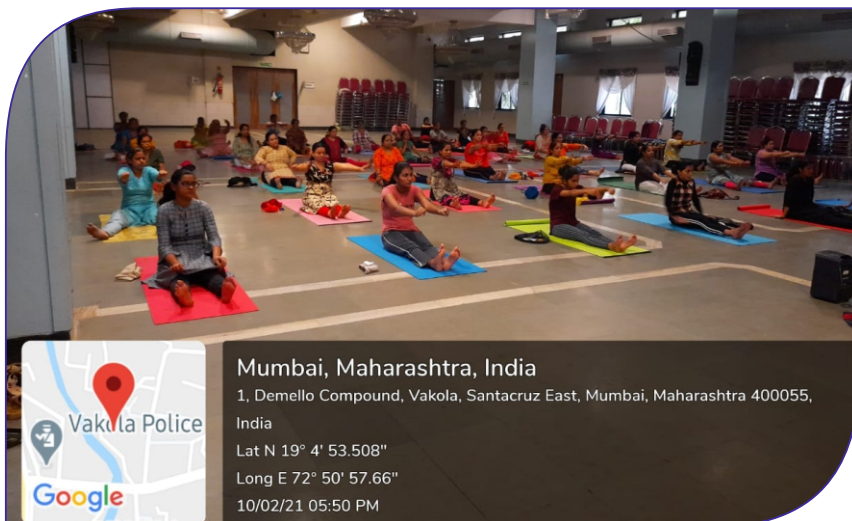


1. To make higher education accessible to all, particularly to socially weak students, enabling them to face challenges of life with a positive attitude.
2. To provide a conducive atmosphere for intellectual development and to impart authentic leadership training.
3. To give better facilities and total delight to all stakeholders.
4. To be at the forefront in all fields of education.
5. To promote effective use of information technology to ensure continuous improvement in imparting quality education.
6. To start courses and curriculum to meet market needs.
7. To promote global standards of professional education in an environment attentive to requirements of partner institutions.
8. To ensure that administrative and accounting records are up-to-date and reviewed regularly.
9. To make students responsible citizens of the country by stimulating social responsibilities through community-oriented programmes.
10. To provide facilities for overall personality development of students.



YOGA

Our College provides the Auditorium to Advanced Locality Management, Vakola to teach Yoga to homemakers in the vicinity of the College. Nearly 100 females take advantage of learning Yoga, keeping them fit, fine and stress free.



BLOOD DONATION AND THALESEEMIA CHECK-UP

Blood is life line. Donating blood means saving a life. Our College with NSS unit organises a blood donation camp making the every individual aware of their responsibility as a good citizen as well as a better human being. Thalessemia check-ups can identify the patient at early stage and the treatment can help him/ her to recover.



PAPER BAGS MAKING AND DISTRIBUTION

Our College NSS Unit every year prepares paper bags and the same are distributed to the nearby vendors. This creates a positive attitude towards environment consciousness among the students, vendors and the customers using these paper bags.



101 'A' , Ground Floor, Jyoti Sadan, Opp Patuck College, Vakola, Santacruz (E), Demello Compound, Vakola, Santacruz East, Mumbai, Maharashtra 400055, India
 MGRS, USNG
 43QBB 7375B 11190
 Local 09:33:22 AM Altitude -60.2 meters
 GMT 03:53:22 AM Friday, 22-01-2021

101 'A' , Ground Floor, Jyoti Sadan, Opp Patuck College, Vakola, Santacruz (E), Demello Compound, Vakola, Santacruz East, Mumbai, Maharashtra 400055, India
 MGRS, USNG
 43QBB 7375B 11190
 Local 08:47:12 AM Altitude -60.2 meters
 GMT 03:17:12 AM Friday, 22-01-2021

101 'A' , Ground Floor, Jyoti Sadan, Opp Patuck College, Vakola, Santacruz (E), Demello Compound, Vakola, Santacruz East, Mumbai, Maharashtra 400055, India
 MGRS, USNG
 43QBB 7375B 11190
 Local 09:44:37 AM Altitude -60.2 meters
 GMT 04:14:37 AM Friday, 22-01-2021



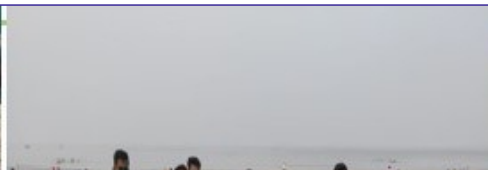
Dattamandir Road, Utkarsh Nagar, Vakola, Santacruz East, Ashok Nagar, Santacruz East, Mumbai, Maharashtra 400055, India
 Latitude Longitude

Dattamandir Road, Utkarsh Nagar, Vakola, Santacruz East, Ashok Nagar, Santacruz East, Mumbai, Maharashtra 400055, India
 Latitude 19.0806716° Longitude 72.850144°

Dattamandir Road, Utkarsh Nagar, Vakola, Santacruz East, Ashok Nagar, Santacruz East, Mumbai, Maharashtra 400055, India
 Latitude 19.0843413° Longitude 72.8506504°

CLEANLINESS DRIVE AT UNIVERSITY OF MUMBAI, KALINA AND KHAR RAILWAY AND JUHU BEACH

As a part of Swachh Bharat Abhiyan, our College participated at cleanliness derive at University of Mumbai, Kalina campus. Our NSS unit also took up in the project of cleaning Khar Railway station and Juhu Beach. Our Students with great vigour participated. They while cleaning understood the phrase “Cleanliness is next to Godliness.”



ROAD SAFETY MEASURES

Rash and careless driving would lead to loss of life of commuters. Our students organised a rally to educate the neighbourhood to benefits of safe driving and following traffic rules. The rally routed from the College campus to Vakola and Kalina.



REDUCE TRAFFIC CONGESTION IN VAKOLA

Helping hand reduces the work pressure and work is performed with ease and efficiently. Our College NSS volunteers have been a helping hand to Vakola Traffic Police at the Vakola junction. Our students were trained to control the traffic and volunteered to help during Ganapati Visarjan.

ELECTION DUTY

Our students also volunteered to help during election time, making them feel proud to be a part of national duty.



MARKET FACILITY PROVIDED TO VEGETABLE VENDORS IN THE CAMPUS

During the pandemic situation, with the help of local police, BMC personnel and with the guidelines of local authorities, our Institute facilitated a place to vegetable vendors who were providing market supplies at Rustomba Patuck Marg. Our playground was used for the same. This helped the vendors to earn their livelihood and also to local people to buy their essentials.



DONATION OF FOOD PACKETS

People become sensitive towards the need of others during COVID situation. Our Institution by pooling the resources distributed food packets of essential goods to the needy students and staff. 760 families were provided with the essentials food items.



VACCINATION CENTRE AT THE CAMPUS

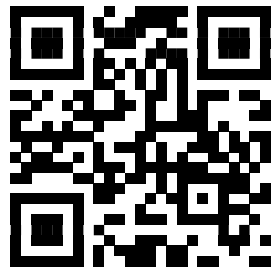
As our social and moral responsibility, we helped the BMC in their vaccination Drive. Our auditorium was the most convenient place in the vicinity for the local people including senior citizens to visit and get vaccinated.



“People will forget what you did for them, but they will never forget how you make them feel.”

Our College is committed to service to society and it demonstrates the attitude of not only developing itself but also the society. It believes that no Institution can survive and succeed since it thrives on society.

Our College makes formalized efforts to connect with the society in vicinity by collaborating with Advanced Locality Management, Vakola, Vakola Traffic Police and BMC Ward office for uplifting the locality of the campus.



Scan with your Smart Phone